

Step 1: Install Passport Charts

Passport Charts are stand-alone digital vector charts subdivided into regions. These charts are encrypted, and you must purchase a Chart Permit number for each chart region you intend to use.

Passport Charts are created from data provided by worldwide hydrographic offices, and are also called World Folios or "WF." For example, World Folio 30 is typically referred to as WF30.



TIP: THE LOWER A WF NUMBER, THE OLDER THE CORRESPONDING CHARTS. JEPPESEN OFFERS AN ANNUAL OR ONE-TIME SERVICE TO UPDATE CHARTS.

If you received a product voucher at the time of your Passport Deluxe purchase, please redeem it for a single Chart Permit before you install your Passport Charts and supplemental data.



TIP: YOU MAY REDEEM YOUR VOUCHER ONLINE OR BY CALLING JEPPESEN CUSTOMER SERVICE.

To install Passport Chart Permits:

1. Close all programs and insert the World Folio disc into your computer.
2. The installer automatically launches the Setup Wizard.
3. If you received a voucher at the time of purchase, on the second screen click **Redeem Voucher** to launch a Voucher Redemption Web page, or telephone Jeppesen Customer Service to redeem the voucher by phone.
 - a. Once you redeem the voucher, write down your Chart Permit number. You can also purchase other Passport Chart regions from Jeppesen at this time.
4. Return to the Setup Wizard. When prompted, enter your Chart Permit number and click **Refresh**. Enter (one at a time) any additional Chart Permit numbers that you have purchased.



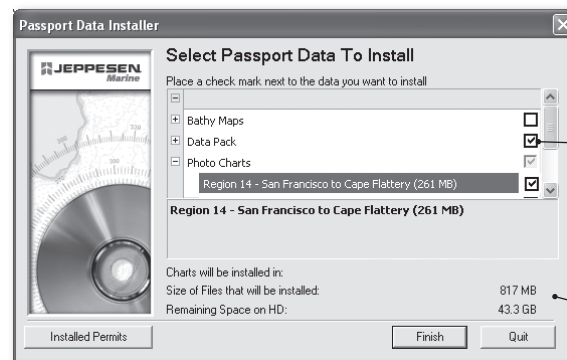
TIP: CHART PERMIT NUMBERS ARE "BACKWARDS COMPATIBLE", MEANING THAT THEY OPEN CHARTS AND DATA FROM EARLIER VERSIONS OF PASSPORT DELUXE (WF19 AND LATER).

Step 2: Install Passport Supplemental Data

Included with your copy of Passport Deluxe are up to four supplemental Passport Data discs (two USA, one Canada, one Bahamas) that contain additional navigation data, such as Coast Pilot, place name marks, local info marks, light and buoy data, ports and services, and so on.

To install Passport Supplemental Data:

1. You must first install Passport Charts and input all Chart Permit numbers; otherwise supplemental data cannot be installed.
2. Close all open programs, and insert one of the Passport Deluxe Data discs. The Installation Wizard validates your Chart Permit numbers.
3. Follow the on-screen instructions. The installer informs you which data is available, based on the Chart Permits you own. Select the check boxes next to the supplemental data types, regions or both, you want to install.
4. Click **Finish** to complete the supplemental data installation.
5. Repeat these steps for each supplemental data disc you want to install.



Select the check box next to the features you want to install.

Keep an eye on disk space.



WARNING: SUPPLEMENTAL DATA CAN TAKE UP SIGNIFICANT AMOUNTS OF HARD DISK SPACE. KEEP AN EYE ON DISK SPACE AVAILABLE (DISPLAYED IN THE RIGHT-HAND CORNER OF THE INSTALLER).

Troubleshooting

- Q: Why isn't the Setup Wizard launching when I insert my disc?**
- A:** Make sure you have closed all open programs before installing Passport Deluxe charts or supplemental data.
- Q: Why can't I install the supplemental data that came with Passport Deluxe?**
- A:** You must first install Passport Charts and input all Chart Permit numbers before installing any supplemental data. Some chart regions do not have all types of data available. If you have installed Passport Charts correctly, it is possible the regions you purchased do not contain the data types you are trying to install.

How to Contact Jeppesen Marine

Jeppesen Marine

15160 NW Laidlaw Road, Suite 100
Portland, OR 97229 USA

Customer Support Phone Numbers

USA:	800 732 2800	6 AM - 7 PM MT
Europe:	+49 6102 50 8171	8 AM - 5 PM CET
All Other Locations:	+1 303 328 6983	6 AM - 7 PM MT

Sales Phone Numbers

USA:	800 946 2877	8 AM - 5 PM PT
All Other Locations:	+1 503 579 1414	8 AM - 5 PM PT

Fax: +1 503 579 1304 (North America)/+49 6102 50 8189 (Europe)

Email: sales@passportonboard.com (Sales)/support@passportonboard.com (Support)

Web site: www.passportonboard.com

RRWPX00001 03/2007

Passport Deluxe™ Quick Start Guide

Thank you for purchasing Passport Deluxe—Jeppesen Marine's comprehensive supplemental nautical data solution for North America, the Bahamas, and Hawaii. Passport Deluxe includes photo charts, raster charts, and 3-D bathymetric (sea-floor) charts, and an additional supplemental Data Pack containing Coast Pilot™, place name marks, local info marks, light and buoy data, geographic location marks, and World Port Index™ marks.

Passport Deluxe also includes Passport World Charts™—Jeppesen's signature brand of the entire World Folio collection of over 14,000 global digital vector nautical charts, subdivided into regions.

Each Passport World Chart region is unlocked with a Chart Permit. If you do not have a Chart Permit, you may purchase one separately from Jeppesen or any authorized Jeppesen Marine product dealer.



NOTE: NOT EVERY PASSPORT DELUXE REGION INCLUDES ALL DATA TYPES. USGS TOPOGRAPHIC MAPS ARE ALSO AVAILABLE UPON REQUEST. REFER TO WWW.PASSPORTONBOARD.COM FOR COMPLETE DETAILS.

Installation is done in two steps:



Step 1: Install Passport Charts

Purchase Chart Permits for all Passport World Chart™ and Deluxe™

regions you intend to use in navigation, and redeem the enclosed voucher (if applicable) via telephone or Web site. Insert the Passport Chart disc into your computer or plotter. Installation should start automatically.



Step 2: Install Supplemental Data

Chart Permits also validate available supplemental data.

Once you've installed your charts, insert the supplemental data disc into your computer. Installation should start automatically.

NOTE: Not all data types are available in all regions.